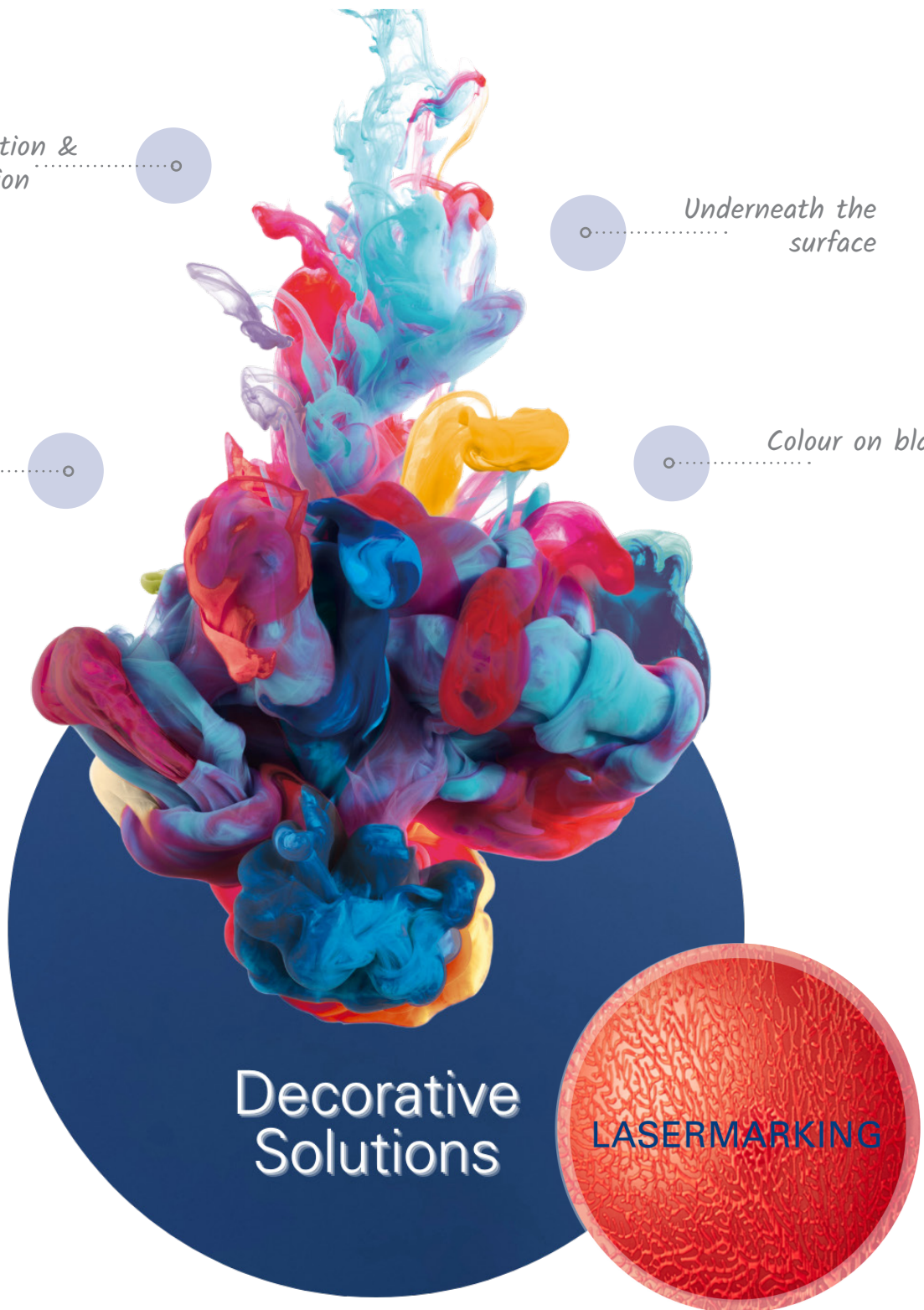


*Individualization &
Personalization*

*Underneath the
surface*

*Innovative
Designs*

Colour on black



**Decorative
Solutions**

LASERMARKING

Explore the difference - Decorative Solutions is our source of inspiration. It lifts the possibilities of plastic packaging to another level and enables you to explore our products with all senses on many different surfaces.

Our laser additive masterbatch enables the contact-free, permanent marking, labelling and decoration of plastic parts without using any printing ink or solvents. A marking can be made on soft, coarse, stepped and curved surfaces and is abrasion-resistant, chemical-resistant and lightfast. The use of laser additive masterbatch makes it possible to create customized designs and personalized markings and is perfectly suited to complex and rapidly changing layouts.

Laser Additive Masterbatch



BIOL5AC4347LS
E = 1% in PLA



HP4BA5847 Metallic
E = 2% in PP



HP9B5757LS
E = 2% in PP



HP1279LS
E = 2% in HDPE



HP465957LS
E = 2% in HDPE



HP751237LS
E = 2% in HDPE



PP9BA4217LS
E = 2% in PP



PP9BA4217LS
E = 2% in PP

Laser Additive Masterbatch



SAN8AA8987LS
E = 2% in ABS



UNS752817LS
E = 2% in PP



PP5BA9397 Metallic
E = 6% in PP



HP2BA2507LS
E = 2% in TPU



HP6BA7487LS
E = 2% in PP



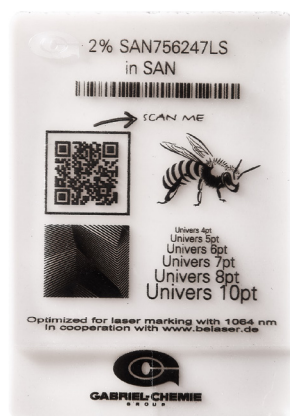
PA6BA9607 Metallic
E = 2% in PA



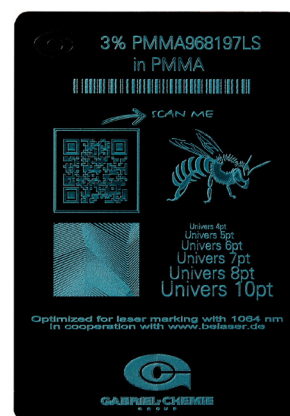
PA9BA1917LS
E = 2% in PA



PC6BB8247LS
E = 2% in PC



SAN756247LS
E = 2% in SAN



PMMA968197LS
E = 3% in PMMA

Technical Data „Laser“

Product Code	Dosage		Temperature	Lightfastness	„Food Approved in EU“
BIOL5AC434LS	1%	in PLA	260	7-8	Yes
HP4BA5847 Metallic	2%	in PP	300	7-8	Yes
HP9B5757LS	2%	in PP	300	8	Yes
HP1279LS	2%	in HDPE	300	7-8	Yes
HP465957LS	2%	in HDPE	290	6-7	Yes
HP751237LS	2%	in HDPE	300	8	Yes
PP9BA4217LS	2%	in PP	280	7	Yes
PP9BA4217LS	2%	in PP	280	7	Yes
SAN8AA8987LS	2%	in ABS	300	8	Yes
UNS752817LS	2%	in PP	300	8	Yes
PP5BA9397 Metallic	6%	in PP	280	7	Yes
HP2BA2507LS	2%	in TPU	260	6-7	Yes
HP6BA7487LS	2%	in PP	280	7-8	Yes
PA6BA9607 Metallic	2%	in PA	300	7-8	Yes
PA9BA1917LS	2%	in PA	300	7-8	Yes
PC6BB8247LS	2%	in PC	300	7-8	Yes
SAN756247LS	2%	in SAN	300	8	Yes
PMMA968197LS	3%	in PMMA	280	8	Yes